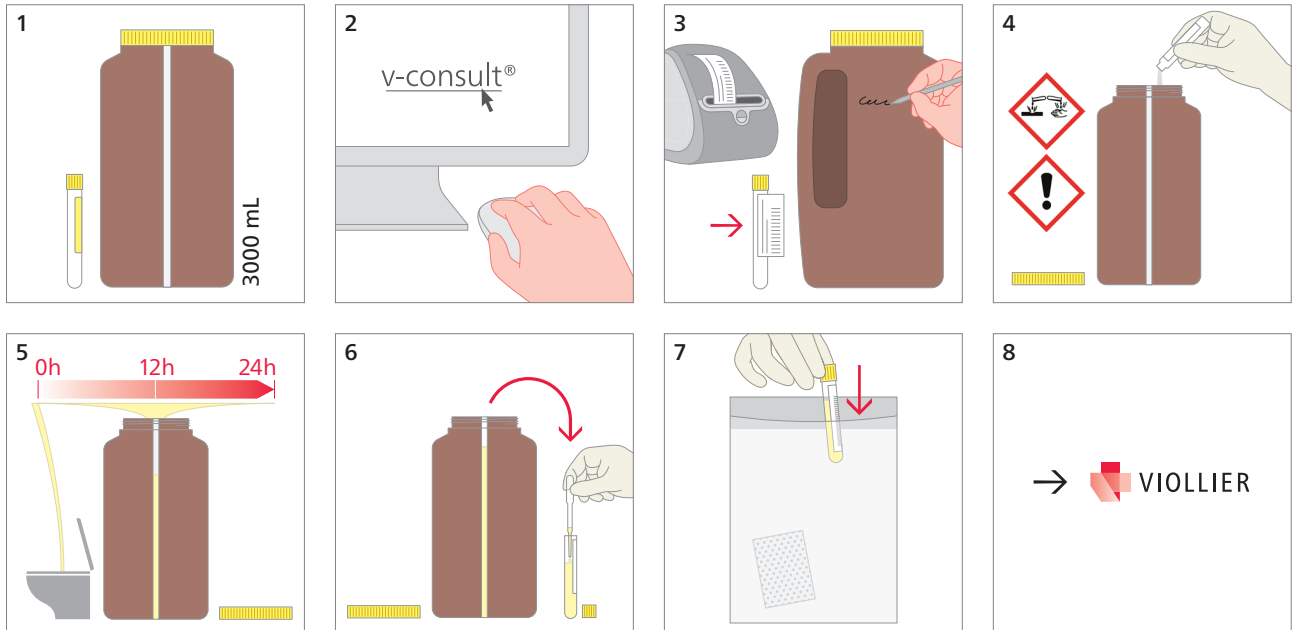


Urine – chemical analyses: 24h urine collection with preservative

Container with preservative (50), spot urine tube with hydrochloric acid (HCl) (53)



- 4 For urine with hydrochloric acid: Add hydrochloric acid (10%) to the container **before** collection
 Caution: Hydrochloric acid is caustic and can cause skin and serious eye irritation!
 Do not allow it to come into contact with mucous membranes. Keep away from children
 → Tox Info Suisse emergency number 145 in case of contact with / corrosive injury from hydrochloric acid

 - 5 Start of collection period: Discard first morning urine, then collect all urine portions until the next morning, including first morning urine
 Store the container as cool and dark as possible over the course of the collection period
 Note collection time and volume and inform the doctor about this. The doctor records the data in v-consult®

 - 6 Mix urine; fill at least one spot urine tube completely with urine
 → Minimum amount for analysis in accordance with v-consult®

- Please dispose of the container and its content at the practice

Shipping material:

Please note the last name, first name, and birthday of the patient