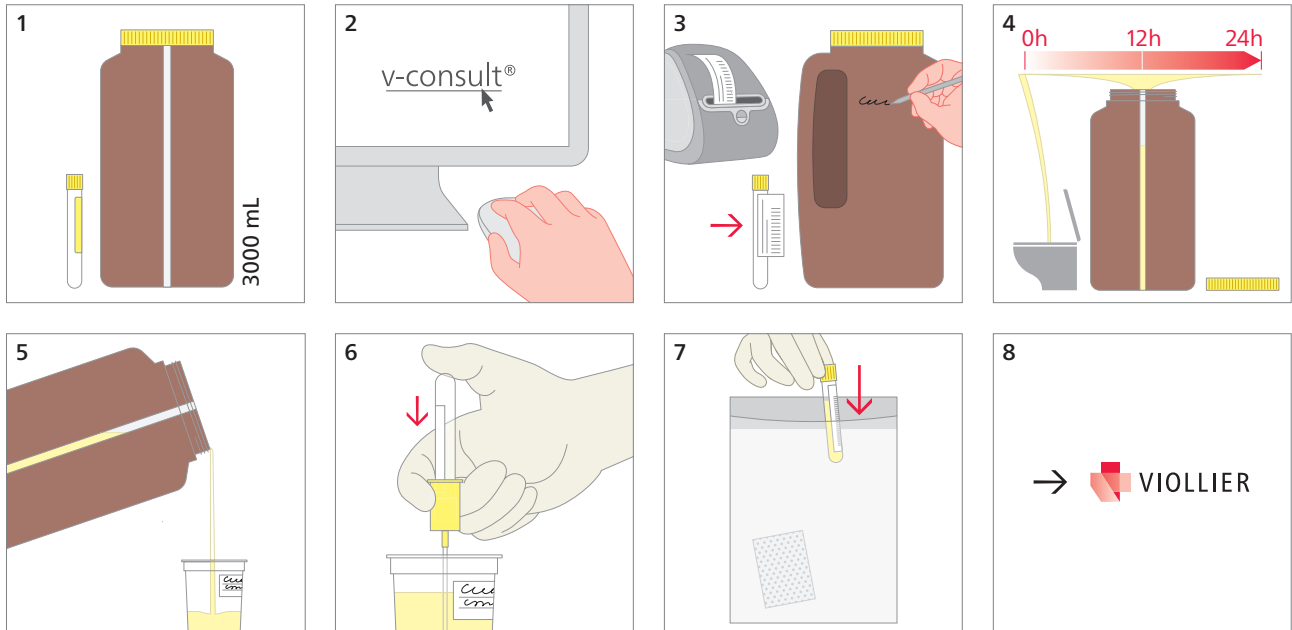


## Urine – chemical analyses: 24h urine collection without preservative

Container without preservative (50), spot urine tube without preservative (52)



4 Start of collection period: Discard first morning urine, then collect all urine portions until the next morning, including first morning urine  
Store the container as cool and dark as possible over the course of the collection period  
Note collection time and volume and inform the doctor about this. The doctor records the data in v-consult®

5 Mix urine and empty into cup

6 Fill at least one spot urine tube completely with urine → Minimum amount for analysis in accordance with v-consult®

→ Please dispose of the container and its content at the practice

Shipping material:

Please note the last name, first name, and birthday of the patient